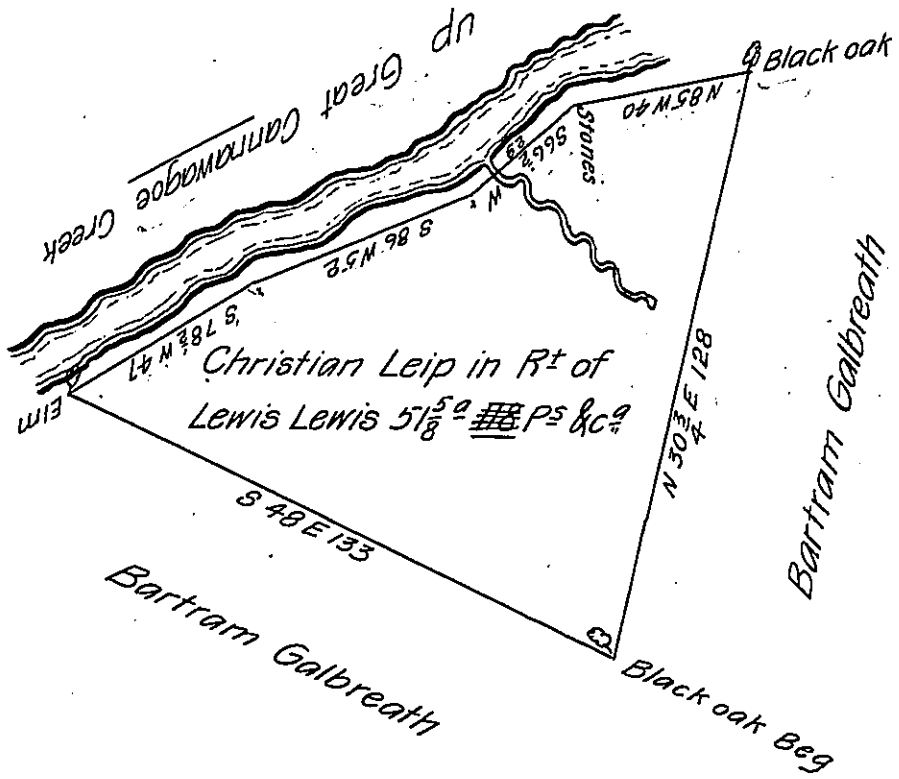


40  
29  
52  
47  
168



A Draught of a tract of land situate in Manchester Township in the County of York. Surveyed the 8<sup>th</sup> day of November ~~September~~ 1786 agreeable to the lines formerly Run by the late Charles Lukens Dep<sup>y</sup> Surveyor. In pursuance of an Application dated the 8<sup>th</sup> day of September 1786 and Numbered 1147 Granted to Lewis Lewis. Containing fifty one acres and one hundred and eighteen perches and the usual allowance of six acres P. Cent for Roads &c<sup>o</sup>.

John Forsyth D. S.

To John Lukens Esquire.  
Surveyor General.

IN TESTIMONY that the above is a copy of the original remaining on file in the Department of Internal Affairs of Pennsylvania, made conformably to an Act of Assembly approved the 16th day of February, 1833, I have hereunto set my Hand and caused the Seal of said Department to be affixed at Harrisburg, this sixteenth day of August 1905.

*Looe P. Brown*  
Secretary of Internal Affairs.